



NEPOT Smart²



UrbanLab for Green Cities
Bucharest, 4 - 6 October, 2024



Nr. 5

About the team

Eduard Gabriel

MANOLESCU

Passionate about technology and urbanism, creator of applications and web platforms.



Florin PETRACHE

Passionate about environmental sustainability.

Diana RADU

**AGRI-TECH ENTREPRENEUR
COMMUNITY MANAGER**



The problem



BUCHAREST District 6



BUCHAREST District 2



The problem

Short description about the problem:

2.1 billion tons annually



Waste generated in EU

(Wood waste is included in the total)

175.000 tons annually



Waste generated in Sector 2

(Wood waste is included in the total)

1,750 to 3,500 tons annually



Furniture are discarded annually.

- A study in the EU suggests that 1-2% of municipal waste is discarded furniture. For Sector 2 of Bucharest, this means an estimated 1,750 to 3,500 tons of furniture are discarded annually.

Existing solutions

Short description of existing solutions

Virtual sales intermediated nationally on sites like:

www.OLX.ro, www.Plubli.24.ro, Facebook Marketplace

Virtual donations intermediated locally and nationally on sites like

www.FreeCycle.ro, Facebook Groups

Physical drop-off of goods at locations in the local and national network:

www.HartaReciclarii.ro - Local Map

Local physical donations intermediated [in proximity] to:

Friends & NGO's



Our solution

NEPOT a sustainability-driven business dedicated to reducing wood waste by giving furniture a second life.



Small Community Hub



We aim to integrate individuals from low-income group

Center Hub (where unsold or irreparable items are dismantled, sorted, and sent to recycling facilities)



Our solution - the competitive advantage

	Our solution	www.OLX.ro , www.Plubli.24.ro , Facebook Marketplace	www.FreeCycle.ro , Facebook: Grupuri diverse	www.HartaReciclarii.ro	Donatii fizice LOCAL catre: prieteni, ONG-uri
Hibryd: ONLINE PLATFORM [virtual placement] + PHYSICAL placement [place objects in proximity hubs 15 minutes from home]	✓	✓	✓	✓	✗
CENTRALIZED PLATFORM	✓	✓	✓	✗	✗
SHIPPING INTEGRATED	✓	✗	✗	✗	✗
It provides traceability of the goods.	✓	✗	✗	✗	✗
Oportunity to extend the life of old furniture & accessories by reconditioning by artists, and later sold or included by DESIGNERS in furnishing projects.	✓	✓	✗	✗	✗
Social inclusion for disadvantaged categories in the work activity.	✓	✗	✗	✗	✗
Organization of artist and community events, refurbishing furniture and accessories to extend life.	✓	✗	✗	✗	✗
The non-refurbished furniture will be disassembled, transformed into components that can be sold and reused, and the rest of the materials transformed into raw materials for the industry in the field or related industries.	✓	✗	✗	✗	✗
NGO's connection	✓	✗	✗	✗	✗



Scalability & replicability potential

Describe what elements of your solution make it easy to replicate and implement at scale in other cities.

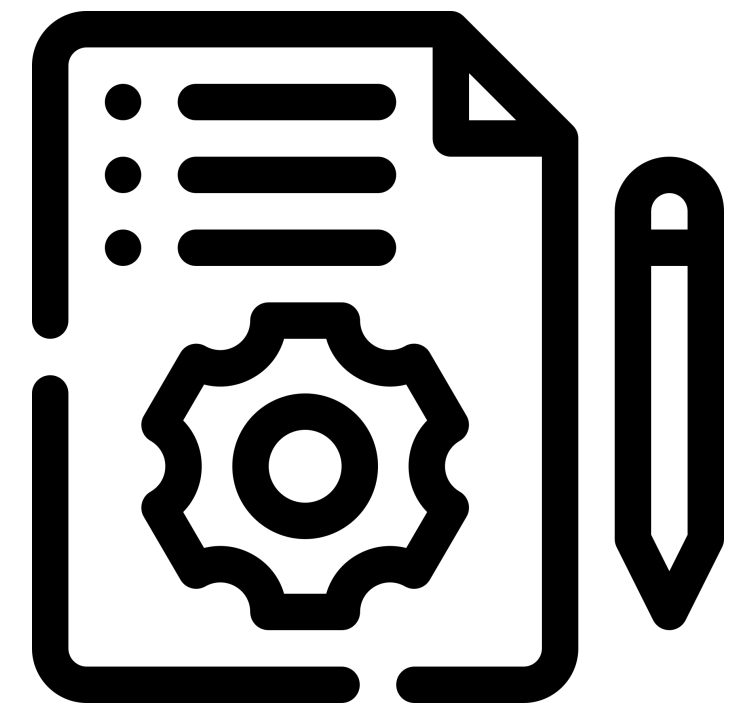
1. Localized Focus: Tailored services for specific neighborhoods ensure relevance and community buy-in.
2. Simple Platform: An easy-to-use online interface for scheduling and listings simplifies user interaction.
3. Partnership Model: Collaboration with local businesses and recycling centers fosters community support and resource sharing.
4. Scalable Processes: Standardized operational procedures for pickups and refurbishing allow for quick adaptation in new locations.
5. Flexible Marketing: Proven community engagement strategies can be adapted to different demographics easily.
6. Educational Component: Workshops promote sustainability and draw community involvement, making it easy to implement in diverse settings.



Implementation plan

Describe the implementation plan for the pilot project, taking into account the time indicators:

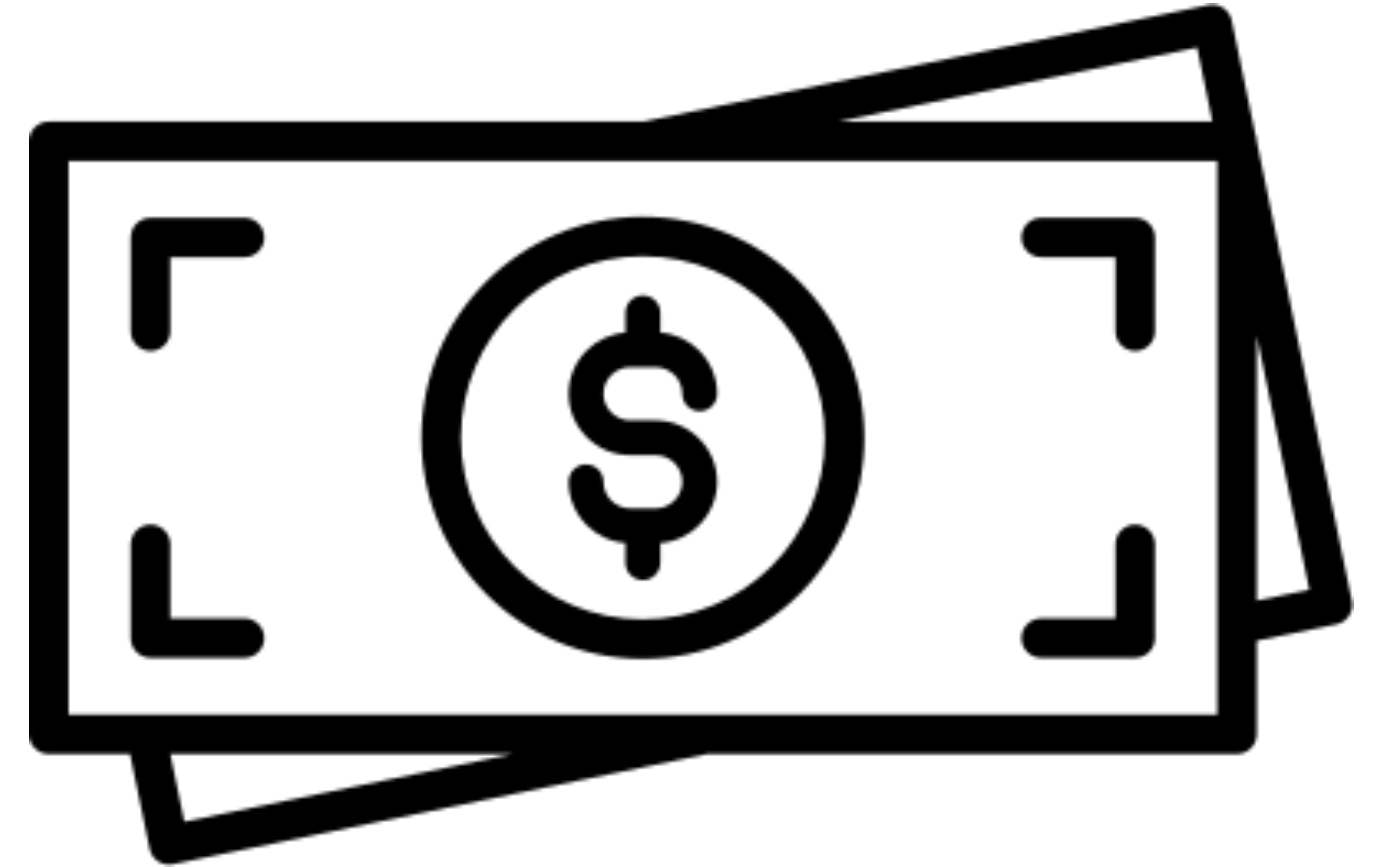
- Months **1-3**: Activation events within members of community & Creating an image online
- Months **3-12**: Establish the first Nepot Neighborhood Hub.
- Months **12-24**: Scale Neighborhood Hub up to 4 Nepot Hub
- Months **24+**: Central Hub Establishment & Expansion



Business Model

What are 3 business models you can apply to capture income?

- Materials sold for recycling
- Furniture sold on the marketplace
- Public funding through grants and regional calls

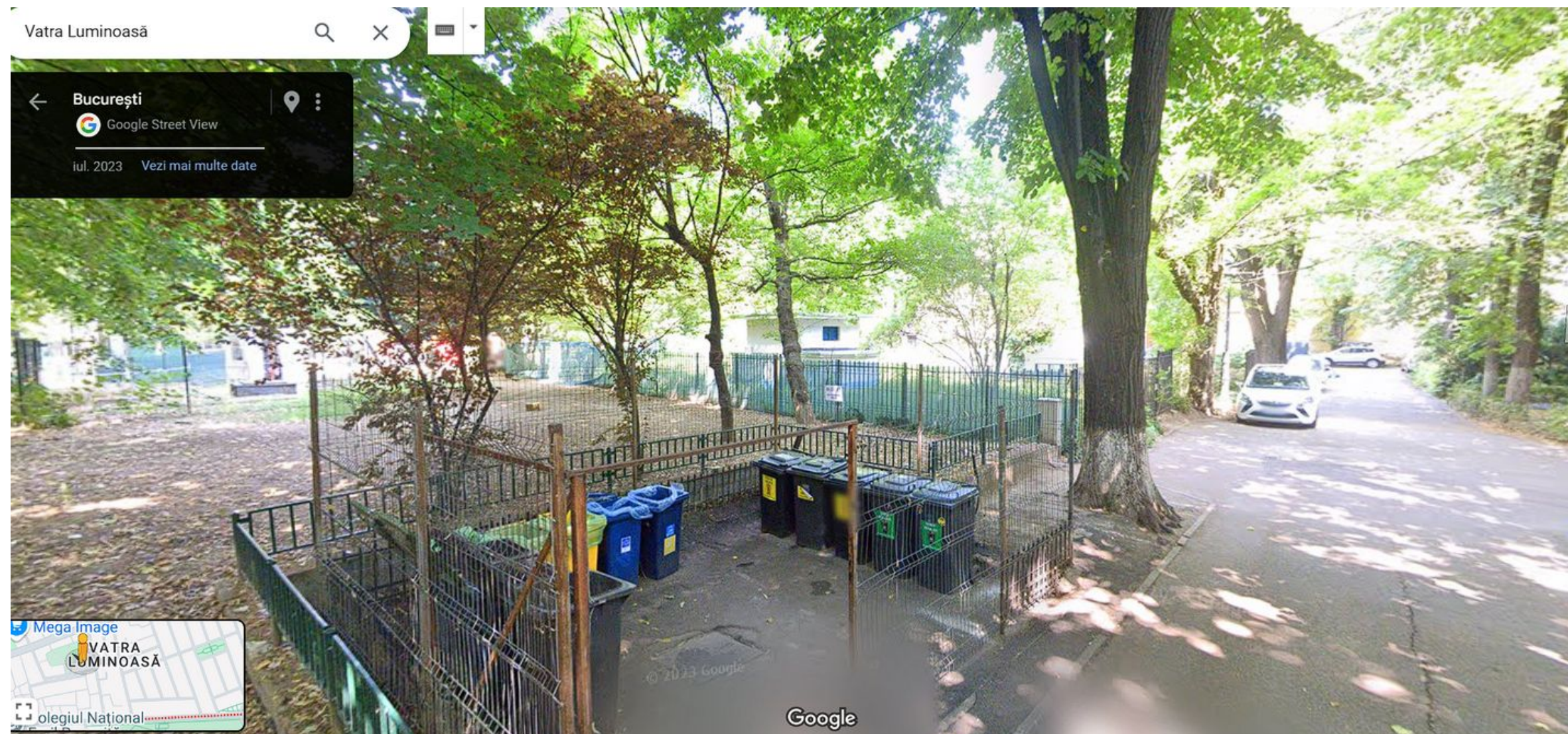


NEPOT Smart ²

Thank you!



VATRA LUMINOASA



Necessary investments

Investment	Price	Nr. items	Total
Pilot program: Mini Hub aprox. display shelves with P.50 x H.220cm 10 lm	4.000 RON	1	= 5.000 RON
Total investments			X 5.000 RON



Necessary costs

Costs	Price	Nr. items	Total
Transport		100	=price*item
		5	
Total costs			X RON

