

Organizat de



Sub inaltul patronaj al



MINISTERUL CERCETĂRII,  
INOVARII ȘI DIGITALIZĂRII

Parteneri:



Kingdom of the Netherlands

BUCUREȘTI

# UrbanLab for Green Cities

17-19 Noiembrie

 The Entrepreneurship  
Academy

PEOPLE SHAPING SMART/ RESILIENT/ SUSTAINABLE/ FRIENDLY/ INNOVATIVE/ GREEN/ VISIONARY/ INCLUSIVE/ CULTURAL CITIES



# CONVERGE CENTER

**UrbanLab** for Green Cities  
București, 17-19 noiembrie 2023

**Nr.**

# CONVERGE Center

## Buică Carmen Nastasia

Student 4th year, Ion Mincu University of Architecture and Urban Planning, Faculty of Urban Planning, Urban Design and Planning



## Ciocaltei Denisa Ionela

Student 4th year, Ion Mincu University of Architecture and Urban Planning, Faculty of Urban Planning, Urban Design and Planning



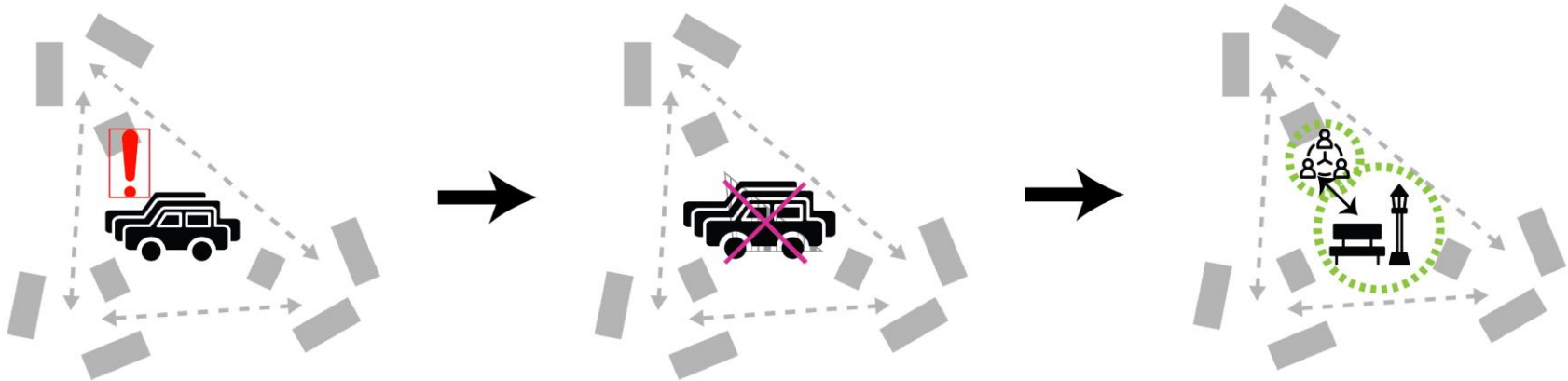
## Topuzaru Maria

Student 4th year, Ion Mincu University of Architecture and Urban Planning, Faculty of Urban Planning, Urban Design and Planning



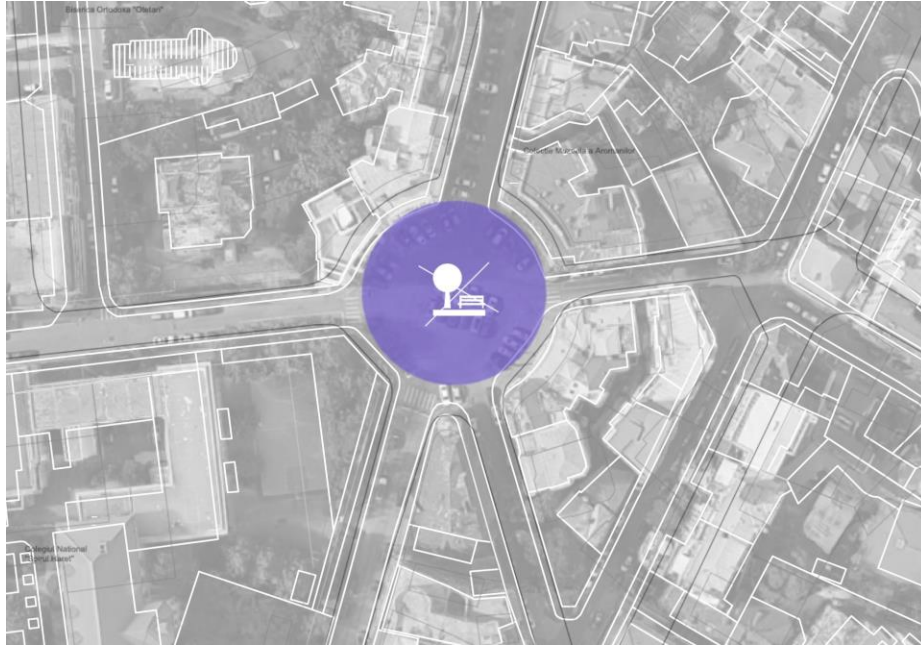
# Problems

- The roundabouts that represent a part of the land that is not used or developed
- the echo produced by the buildings that are too high in relation to the low area in the center of the roundabout
- the lack of urban furniture
- The illegal parking on the sidewalks that make walking difficult

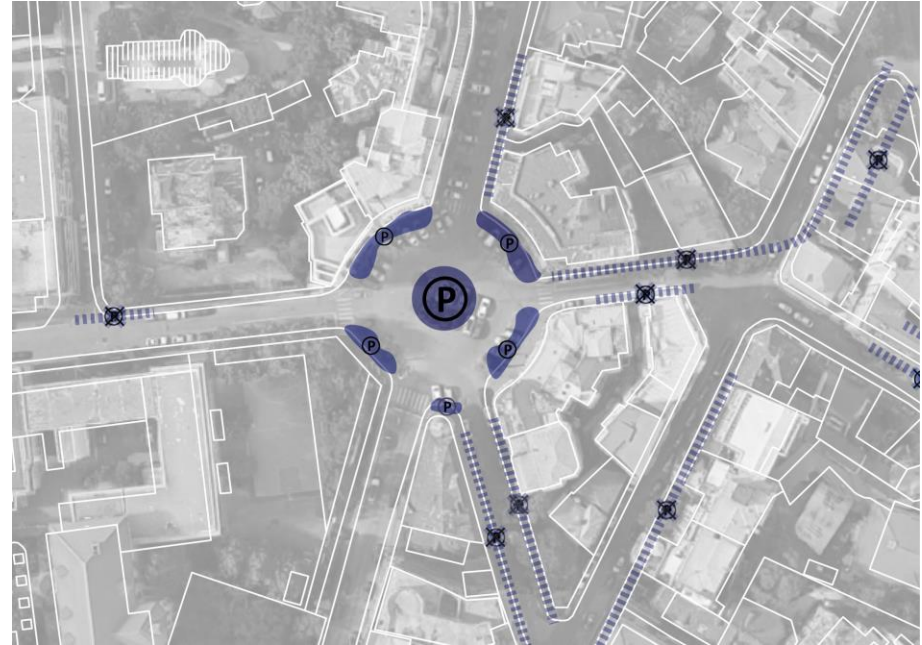


# Problems - VISUAL

## LACK OF URBAN FURNITURE

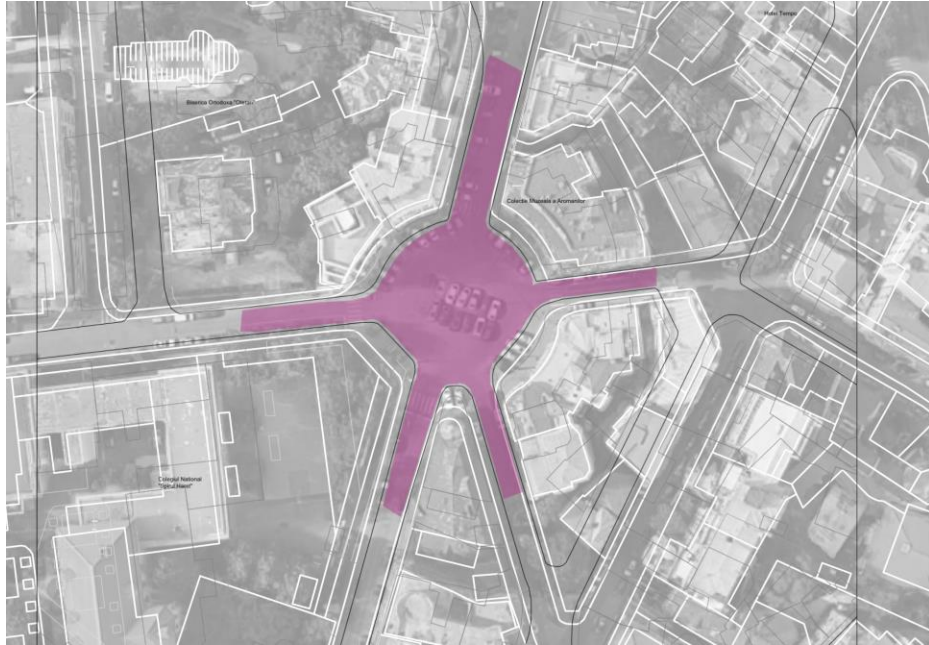


## ILLEGAL PARKING

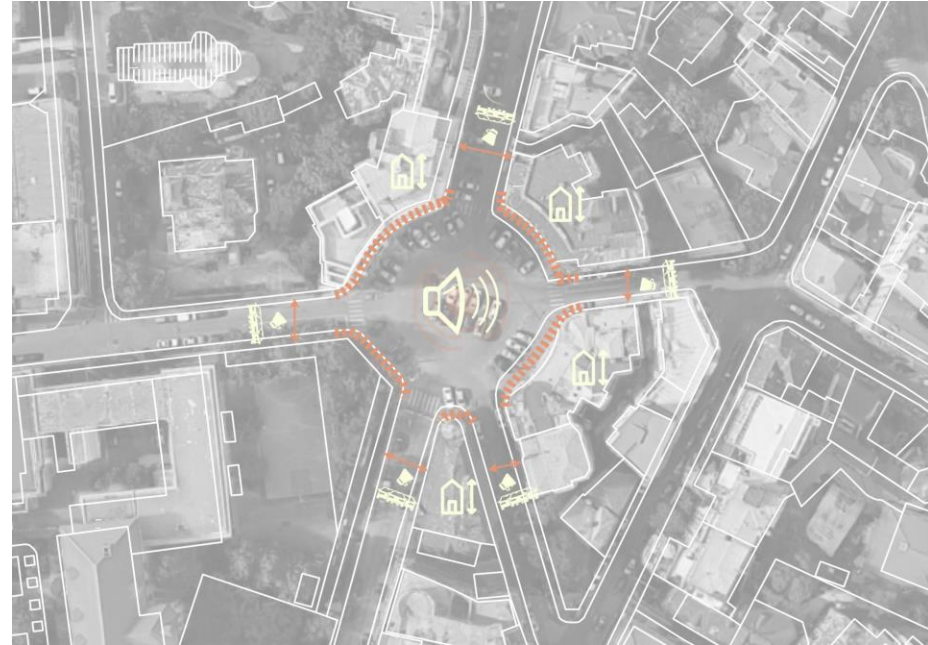


# Problems - VISUAL

## REDUCED ACCESSIBILITY



## NOISE POLLUTION (the volume is amplified by the echo)





# Alternatives adopted by people

- Illegally parking on the sidewalk
- Walking on the street instead of sidewalk





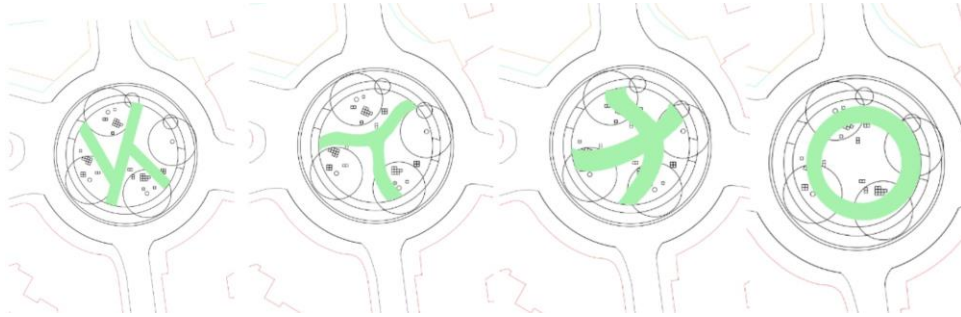
# Exemples of solutions used in Bucharest and Netherlands

In Bucharest, those spaces have become restricted so that the cars won't be able to park in there.  
In Netherlands, those spaces have been transformed in sharespaces, but without urban furniture.

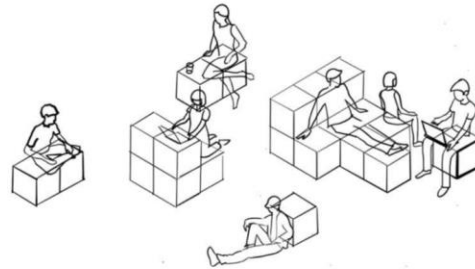


# Our solution

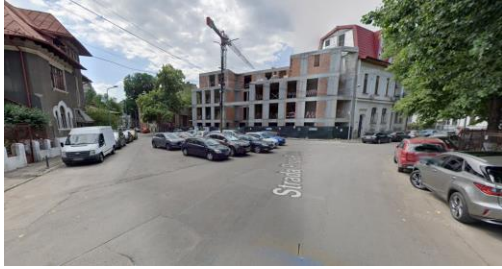
The space will become a center for the community.  
The unusable space in those traffic intersections is redeveloped and transformed in green spaces.  
Moreover, for we use urban furniture made of recycled materials to encourage sustainability.



# OUR SOLUTION - VISUAL



# POTENTIAL OF REPLICABILITY



Small scale projects, recycleble urban furniture, attractive aesthetically



# Solution- Competitive avantajaje

Beneficiile aduce	<i>Soluția noastră</i>	<i>Sens giratoriu Str. Italiana</i>	<i>Sens giratoriu Str. Armenească</i>	<i>Sens giratoriu ex. Olanda Poynton</i>
Facem activități in aer liber	✓	×	×	×
Mobilier urban sustenabil si reciclabil	✓	×	×	✓
Zona verde	✓	×	×	×
Program pilot de voluntariat (unde elevii odata pe saptamana vin si îngrijesc zona )	✓	×	×	×

# Plan of implementation

- Month **1-3**: (chestionare pentru viitorii beneficiari ai spatilui, analize, studiu de fezabilitate)
- Month **3-6**: (elaorare proiect)
- Month **6-24**: (obtinere avize)
- Month **24-25**: (achizitionare materiale)
- Month **25-30**: (implementare)

# Necessary investments

<b>Investiții</b>	<b>Preț</b>	<b>Numărul de bucăți</b>	<b>Total</b>
Pregatire teren	30-40 /mp	500mp	15000-20000
Pavaj	40/mp	500mp	20000
Copaci	75	5	375
Mobilier din materiale reciclabile	333	75	25000
<b>Total costuri</b>			<b>60375- 65375 RON</b>

# Monthly expenses

<b>Costuri</b>	<b>Preț</b>	<b>Metru patrat de suprafata</b>	<b>Total</b>
Intretinere spatiu verde	5	500	2500
Mentenanata mobilier urban	5	500	2500
<b>Total costuri</b>			<b>50 000 RON</b>



# 4 CONVERGE Center

*Thank you!*

